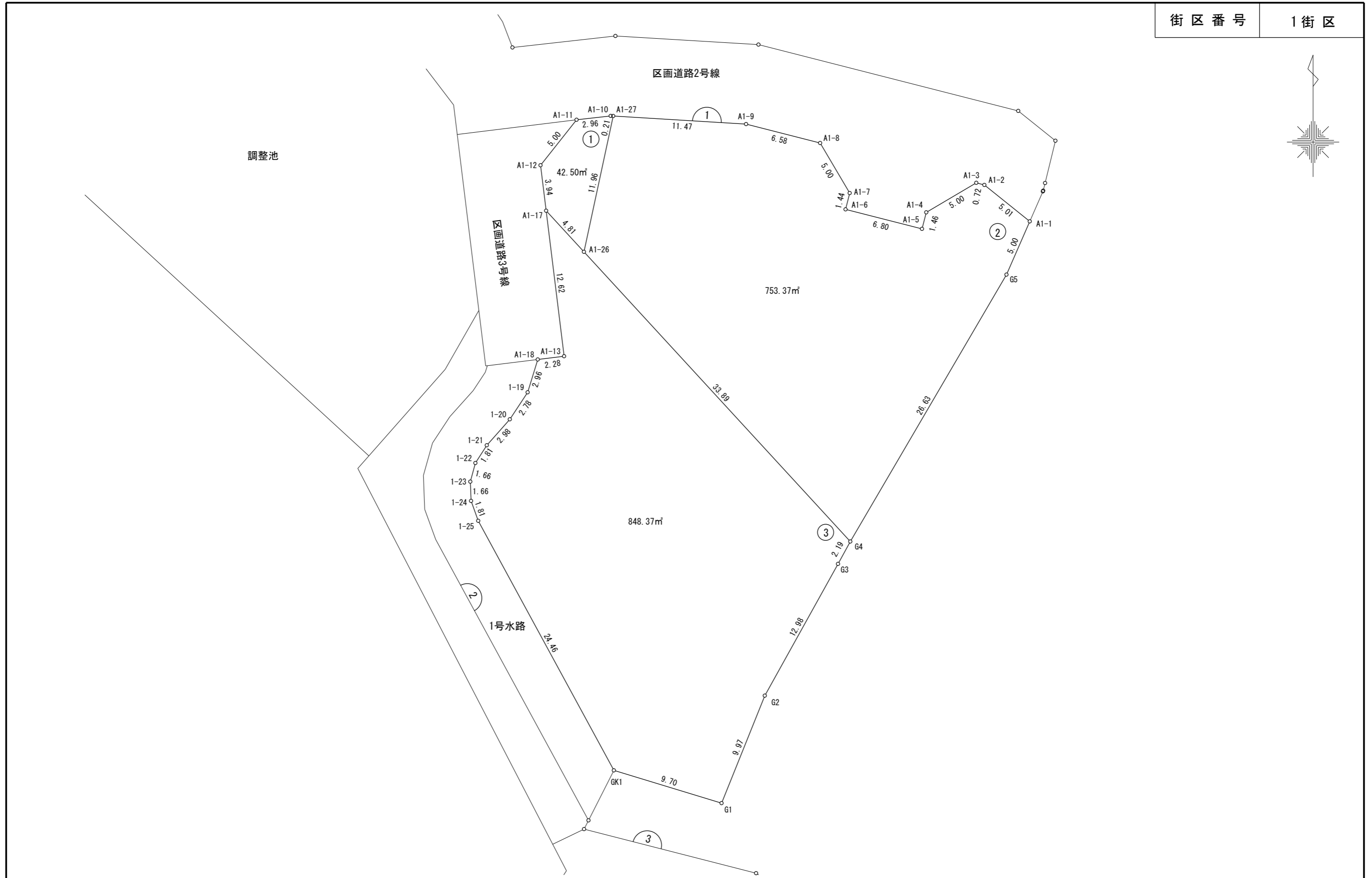


東 部 大 阪 都 市 計 画 事 業
 茄 子 作 南 土 地 区 画 整 理 事 業 画 地 出 来 形 確 認 測 量 図

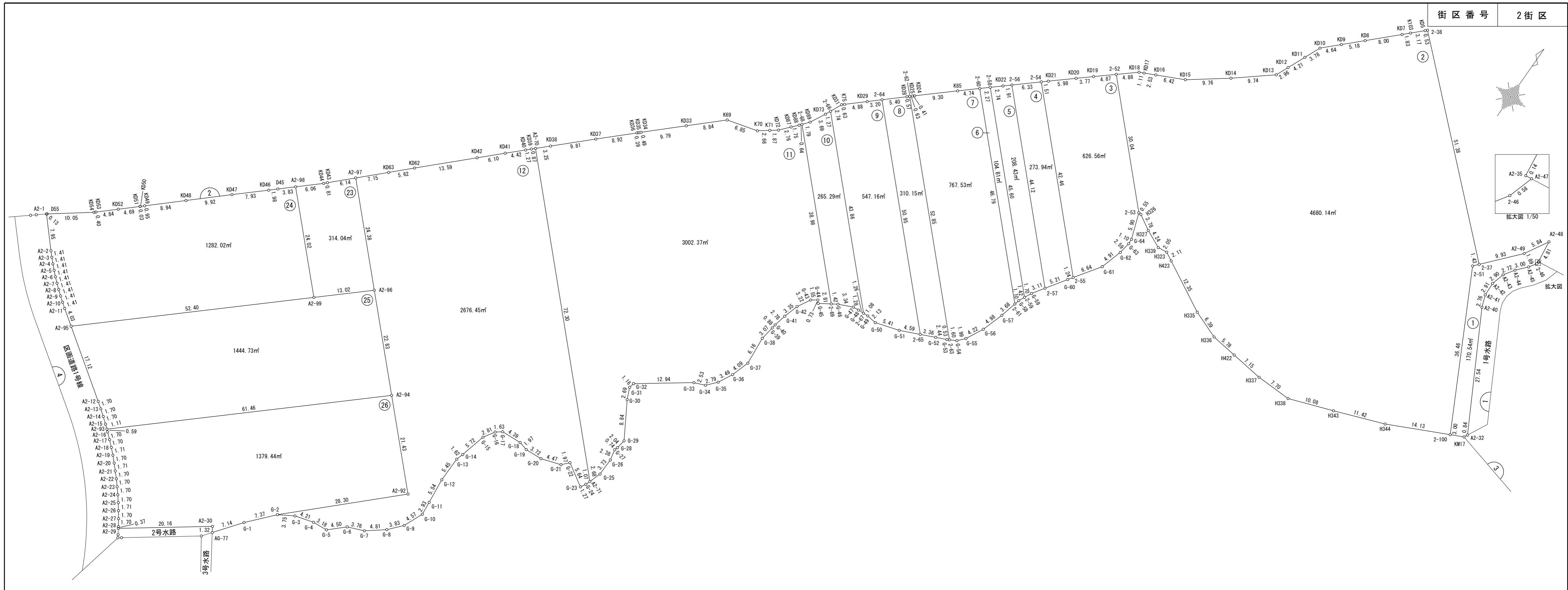
S=1:300

街区番号 1街区



東部大阪都市計画事業
茄子作南土地区画整理事業
画地出来形確認測量図

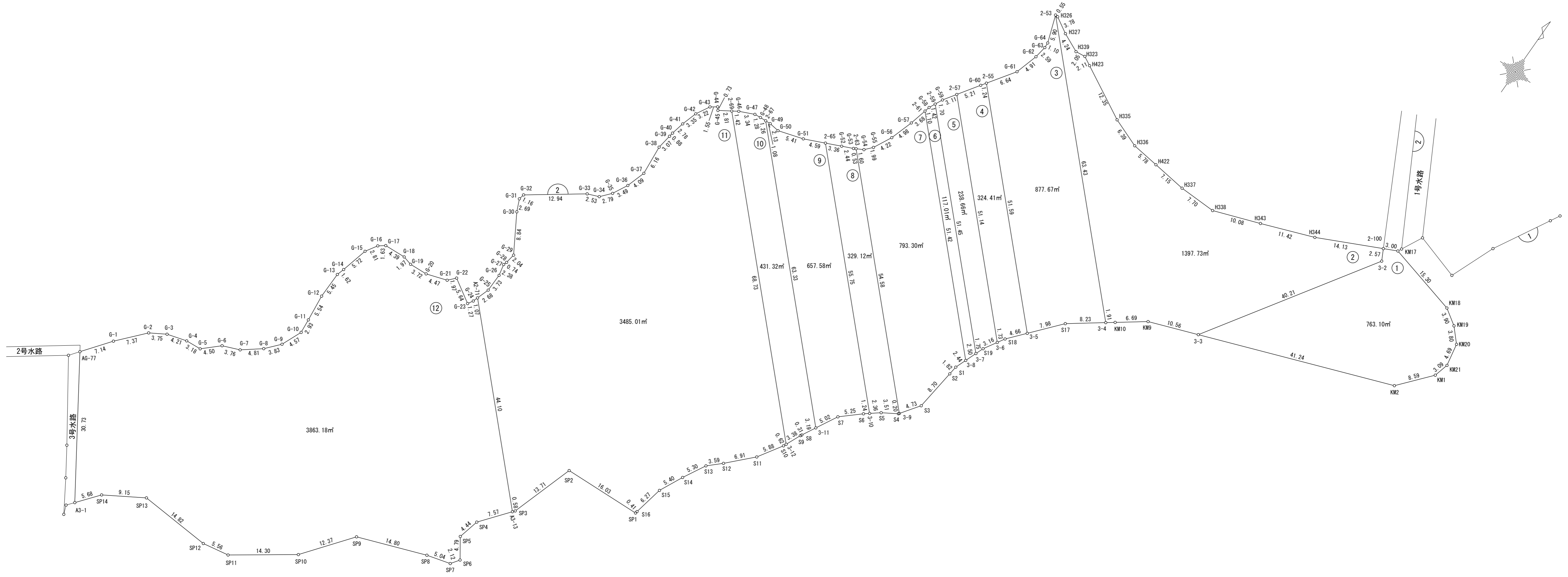
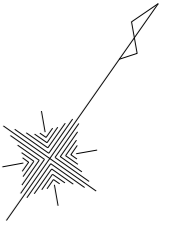
S=1:500



東 部 大 阪 都 市 計 画 事 業
 茄 子 作 南 土 地 区 画 整 理 事 業 画 地 出 来 形 確 認 測 量 図

S=1:500

街区番号 3街区



面積（倍横距法）計算書

地番： 1-1画地

測点名	X座標	Y座標	D X	D Y	倍横距	倍面積	方向角	夾角	距離
A1-17	-135455.517	-30225.427	-3.541	3.258	3.258	-11.536578	137-23-01	144-24-35	4.81
A1-26	-135459.058	-30222.169	11.696	2.521	9.037	105.696752	12-09-49	54-46-48	11.96
A1-27	-135447.362	-30219.648	0.006	-0.213	11.345	0.068070	271-36-20	79-26-31	0.21
A1-10	-135447.356	-30219.861	-0.330	-2.942	8.190	-2.702700	263-36-41	172-00-21	2.96
A1-11	-135447.686	-30222.803	-3.919	-3.106	2.142	-8.394498	218-23-34	134-46-53	5.00
A1-12	-135451.605	-30225.909	-3.912	0.482	-0.482	1.885584	172-58-26	134-34-52	3.94
合計					倍面積	85.016630			28.88
					面積	42.5083150			
					坪数	12.85			

面積（倍橫距法）計算書

地番： 1-2画地

測点名	X座標	Y座標	D X	D Y	倍橫距	倍面積	方向角	夾角	距離
A1-26	-135459.058	-30222.169	-24.948	22.951	22.951	-572.581548	137-23-15	125-13-26	33.89
G4	-135484.006	-30199.218	22.986	13.458	59.360	1364.448960	30-20-54	72-57-39	26.63
G5	-135461.020	-30185.760	4.584	2.006	74.824	342.993216	23-38-17	173-17-23	5.00
A1-1	-135456.436	-30183.754	3.138	-3.911	72.919	228.819822	308-44-06	105-05-49	5.01
A1-2	-135453.298	-30187.665	0.184	-0.698	68.310	12.569040	284-45-46	156-01-40	0.72
A1-3	-135453.114	-30188.363	-2.544	-4.309	63.303	-161.042832	239-26-34	134-40-48	5.00
A1-4	-135455.658	-30192.672	-1.422	-0.366	58.628	-83.369016	194-26-14	134-59-40	1.46
A1-5	-135457.080	-30193.038	1.679	-6.590	51.672	86.757288	284-17-53	269-51-39	6.80
A1-6	-135455.401	-30199.628	1.404	0.357	45.439	63.796356	14-16-25	269-58-32	1.44
A1-7	-135453.997	-30199.271	4.311	-2.547	43.249	186.446439	329-25-16	135-08-51	5.00
A1-8	-135449.686	-30201.818	1.630	-6.380	34.322	55.944860	284-19-54	134-54-38	6.58
A1-9	-135448.056	-30208.198	0.694	-11.450	16.492	11.445448	273-28-07	169-08-13	11.47
A1-27	-135447.362	-30219.648	-11.696	-2.521	2.521	-29.485616	192-09-49	98-41-42	11.96
合計					倍面積	1506.742417			120.96
					面積	753.3712085			
					坪数	227.89			

面積 (倍 橫 距 法) 計 算 書

地 番 : 1-3画地

測点名	X座標	Y座標	D X	D Y	倍橫距	倍面積	方向角	夾 角	距 離
GK1	-135503.713	-30219.589	-2.824	9.280	9.280	-26.206720	106-55-32	135-28-17	9.70
G1	-135506.537	-30210.309	9.259	3.724	22.284	206.327556	21-54-37	94-59-05	9.97
G2	-135497.278	-30206.585	11.347	6.311	32.319	366.723693	29-04-55	187-10-18	12.98
G3	-135485.931	-30200.274	1.925	1.056	39.686	76.395550	28-44-52	179-39-57	2.19
G4	-135484.006	-30199.218	24.948	-22.951	17.791	443.849868	317-23-15	108-38-23	33.89
A1-26	-135459.058	-30222.169	3.541	-3.258	-8.418	-29.808138	317-23-01	179-59-46	4.81
A1-17	-135455.517	-30225.427	-12.531	1.547	-10.129	126.926499	172-57-44	35-34-43	12.62
A1-13	-135468.048	-30223.880	-0.279	-2.266	-10.848	3.026592	262-58-51	270-01-07	2.28
A1-18	-135468.327	-30226.146	-2.829	-0.873	-13.987	39.569223	197-08-59	114-10-08	2.96
1-19	-135471.156	-30227.019	-2.325	-1.537	-16.397	38.123025	213-28-04	196-19-05	2.78
1-20	-135473.481	-30228.556	-2.236	-1.983	-19.917	44.534412	221-34-06	188-06-02	2.98
1-21	-135475.717	-30230.539	-1.528	-0.985	-22.885	34.968280	212-48-26	171-14-20	1.81
1-22	-135477.245	-30231.524	-1.603	-0.437	-24.307	38.964121	195-14-57	162-26-31	1.66
1-23	-135478.848	-30231.961	-1.661	0.065	-24.679	40.991819	177-45-32	162-30-35	1.66
1-24	-135480.509	-30231.896	-1.711	0.615	-23.999	41.062289	160-13-47	162-28-15	1.81
1-25	-135482.220	-30231.281	-21.493	11.692	-11.692	251.296156	151-27-15	171-13-28	24.46
合計						倍面積 面積 坪 数			128.56
						1696.744225			
						848.3721125			
						256.63			

面積（倍橫距法）計算書

地番： 2-1画地

測点名	X座標	Y座標	D X	D Y	倍橫距	倍面積	方向角	夾角	距離
A2-35	-135468.880	-30230.637	4.778	-0.589	-0.589	-2.814242	352-58-25	269-26-51	4.81
A2-48	-135464.102	-30231.226	-5.077	-2.900	-4.078	20.704006	209-43-58	36-45-33	5.84
A2-49	-135469.179	-30234.126	-7.451	-6.578	-13.556	101.005756	221-26-22	191-42-24	9.93
2-37	-135476.630	-30240.704	-1.076	-0.954	-21.088	22.690688	221-33-39	180-07-17	1.43
2-51	-135477.706	-30241.658	-32.369	16.795	-5.247	169.840143	152-34-37	111-00-58	36.46
2-100	-135510.075	-30224.863	1.302	2.704	14.252	18.556104	64-17-20	91-42-43	3.00
KM17	-135508.773	-30222.159	0.753	0.382	17.338	13.055514	26-53-56	142-36-36	0.84
A2-32	-135508.020	-30221.777	24.195	-13.169	4.551	110.111445	331-26-28	124-32-32	27.54
A2-40	-135483.825	-30234.946	2.596	-0.947	-9.565	-24.830740	339-57-30	188-31-02	2.76
A2-41	-135481.229	-30235.893	2.914	-0.111	-10.623	-30.955422	357-49-07	197-51-37	2.91
A2-42	-135478.315	-30236.004	2.797	0.785	-9.949	-27.827353	15-40-38	197-51-31	2.90
A2-43	-135475.518	-30235.219	2.277	1.501	-7.663	-17.448651	33-23-34	197-42-56	2.72
A2-44	-135473.241	-30233.718	2.235	2.004	-4.158	-9.293130	41-52-51	188-29-17	3.00
A2-45	-135471.006	-30231.714	1.581	1.044	-1.110	-1.754910	33-26-18	171-33-27	1.89
2-46	-135469.425	-30230.670	0.561	0.174	0.108	0.060588	17-13-55	163-47-37	0.58
A2-47	-135468.864	-30230.496	-0.016	-0.141	0.141	-0.002256	263-31-34	66-17-39	0.14
合計					倍面積	341.097540			106.75
					面積	170.5487700			
					坪数	51.59			

面積（倍橫距法）計算書

地番： 2-2画地

測点名	X座標	Y座標	D X	D Y	倍橫距	倍面積	方向角	夾角	距離
2-53	-135509.403	-30306.785	-0.042	0.550	0.550	-0.023100	94-22-01	138-38-20	0.55
H326	-135509.445	-30306.235	-1.905	3.270	4.370	-8.324850	120-13-25	205-51-24	3.78
H327	-135511.350	-30302.965	-1.766	3.859	11.499	-20.307234	114-35-25	174-22-00	4.24
H339	-135513.116	-30299.106	0.240	2.037	17.395	4.174800	83-16-49	148-41-24	2.05
H323	-135512.876	-30297.069	-0.994	1.862	21.294	-21.166236	118-05-41	214-48-52	2.11
H423	-135513.870	-30295.207	-5.816	10.906	34.062	-198.104592	118-04-13	179-58-32	12.35
H335	-135519.686	-30284.301	-2.267	5.981	50.949	-115.501383	110-45-30	172-41-17	6.39
H336	-135521.953	-30278.320	-0.690	5.741	62.671	-43.242990	96-51-12	166-05-42	5.78
H422	-135522.643	-30272.579	-0.855	7.099	75.511	-64.561905	96-52-03	180-00-51	7.15
H337	-135523.498	-30265.480	-0.166	7.706	90.316	-14.992456	91-14-03	174-22-00	7.70
H338	-135523.664	-30257.774	3.429	9.486	107.508	368.644932	70-07-34	158-53-31	10.08
H343	-135520.235	-30248.288	4.029	10.694	127.688	514.454952	69-21-21	179-13-47	11.42
H344	-135516.206	-30237.594	6.131	12.731	151.113	926.473803	64-17-08	174-55-47	14.13
2-100	-135510.075	-30224.863	32.369	-16.795	147.049	4759.829081	332-34-37	88-17-29	36.46
2-51	-135477.706	-30241.658	1.076	0.954	131.208	141.179808	41-33-39	248-59-02	1.43
2-37	-135476.630	-30240.704	34.759	-37.846	94.316	3278.329844	312-33-55	91-00-16	51.38
2-38	-135441.871	-30278.550	-0.374	-0.379	56.091	-20.978034	225-22-50	92-48-55	0.53
KD5	-135442.245	-30278.929	-2.229	-2.260	53.452	-119.144508	225-23-44	180-00-54	3.17
K103	-135444.474	-30281.189	-1.282	-1.309	49.883	-63.950006	225-35-49	180-12-05	1.83
KD7	-135445.756	-30282.498	-5.598	-5.717	42.857	-239.913486	225-36-09	180-00-20	8.00
KD8	-135451.354	-30288.215	-3.625	-3.702	33.438	-121.212750	225-36-08	179-59-59	5.18
KD9	-135454.979	-30291.917	-3.251	-3.320	26.416	-85.878416	225-36-06	179-59-58	4.64
KD10	-135458.230	-30295.237	-3.467	-1.513	21.583	-74.828261	203-34-35	157-58-29	3.78
KD11	-135461.697	-30296.750	-3.864	-1.687	18.383	-71.031912	203-35-09	180-00-34	4.21
KD12	-135465.561	-30298.437	-2.721	-1.188	15.508	-42.197268	203-35-11	180-00-02	2.96
KD13	-135468.282	-30299.625	-6.186	-7.535	6.785	-41.972010	230-36-54	207-01-43	9.74
KD14	-135474.468	-30307.160	-5.850	-7.816	-8.566	50.111100	233-11-11	182-34-17	9.76
KD15	-135480.318	-30314.976	-2.805	-5.778	-22.160	62.158800	244-06-19	190-55-08	6.42
KD16	-135483.123	-30320.754	-1.108	-2.283	-30.221	33.484868	244-06-41	180-00-22	2.53

地 番 : 2-2画地

測点名	X座標	Y座標	D X	D Y	倍横距	倍面積	方向角	夾 角	距 離
KD17	-135484.231	-30323.037	-0.486	-1.001	-33.505	16.283430	244-06-10	179-59-29	1.11
KD18	-135484.717	-30324.038	-3.170	-3.723	-38.229	121.185930	229-35-12	165-29-02	4.88
2-52	-135487.887	-30327.761	-21.516	20.976	-20.976	451.319616	135-43-41	86-08-29	30.04
合計					倍面積	9360.299567			275.78
					面 積	4680.1497835			
					坪 数	1415.74			

面積（倍橫距法）計算書

地番： 2-3画地

測点名	X座標	Y座標	DX	DY	倍橫距	倍面積	方向角	夾角	距離
2-55	-135528.826	-30310.358	5.474	3.770	3.770	20.636980	34-33-20	78-49-43	6.64
G-61	-135523.352	-30306.588	4.713	1.404	8.944	42.153072	16-35-20	162-02-00	4.91
G-62	-135518.639	-30305.184	2.558	0.411	10.759	27.521522	9-07-40	172-32-20	2.59
G-63	-135516.081	-30304.773	1.107	-0.055	11.115	12.304305	357-09-20	168-01-40	1.10
G-64	-135514.974	-30304.828	5.571	-1.957	9.103	50.712813	340-38-40	163-29-20	5.90
2-53	-135509.403	-30306.785	21.516	-20.976	-13.830	-297.566280	315-43-41	155-05-01	30.04
2-52	-135487.887	-30327.761	-3.160	-3.711	-38.517	121.713720	229-35-05	93-51-24	4.87
KD19	-135491.047	-30331.472	-2.468	-2.858	-45.086	111.272248	229-11-17	179-36-12	3.77
KD20	-135493.515	-30334.330	-3.913	-4.533	-52.477	205.342501	229-11-54	180-00-37	5.98
KD21	-135497.428	-30338.863	-0.991	-1.140	-58.150	57.626650	228-59-59	179-48-05	1.51
2-54	-135498.419	-30340.003	-30.407	29.645	-29.645	901.415515	135-43-37	86-43-38	42.46
合計						倍面積 面積 坪数			1253.133046 626.5665230 189.53

面積（倍橫距法）計算書

地番： 2-4画地

測点名	X座標	Y座標	D X	D Y	倍橫距	倍面積	方向角	夾角	距離
2-57	-135534.175	-30313.980	4.324	2.917	2.917	12.613108	34-00-14	78-16-40	5.21
G-60	-135529.851	-30311.063	1.025	0.705	6.539	6.702475	34-31-13	180-30-59	1.24
2-55	-135528.826	-30310.358	30.407	-29.645	-22.401	-681.147207	315-43-37	101-12-24	42.46
2-54	-135498.419	-30340.003	-4.159	-4.783	-56.829	236.351811	228-59-30	93-15-53	6.33
2-56	-135502.578	-30344.786	-31.597	30.806	-30.806	973.377182	135-43-34	86-44-04	44.12
合計					倍面積	547.897369			99.36
					面積	273.9486845			
					坪數	82.86			

面積（倍橫距法）計算書

地番： 2-5画地

測点名	X座標	Y座標	D X	D Y	倍橫距	倍面積	方向角	夾角	距離
2-59	-135538.299	-30316.460	1.540	0.737	0.737	1.134980	25-34-28	69-50-49	1.70
G-59	-135536.759	-30315.723	2.584	1.743	3.217	8.312728	34-00-04	188-25-36	3.11
2-57	-135534.175	-30313.980	31.597	-30.806	-25.846	-816.656062	315-43-34	101-43-30	44.12
2-56	-135502.578	-30344.786	-1.257	-1.445	-58.097	73.027929	228-58-48	93-15-14	1.91
KD22	-135503.835	-30346.231	-1.809	-2.065	-61.607	111.447063	228-46-51	179-48-03	2.74
2-58	-135505.644	-30348.296	-32.655	31.836	-31.836	1039.604580	135-43-39	86-56-48	45.60
合計					倍面積	416.871218			99.18
					面積	208.4356090			
					坪数	63.05			

面積（倍横距法）計算書

地番： 2-6画地

測点名	X座標	Y座標	D X	D Y	倍横距	倍面積	方向角	夾角	距離
2-61	-135540.651	-30317.340	1.070	0.267	0.267	0.285690	14-00-40	58-17-02	1.10
G-58	-135539.581	-30317.073	1.282	0.613	1.147	1.470454	25-33-19	191-32-39	1.42
2-59	-135538.299	-30316.460	32.655	-31.836	-30.076	-982.131780	315-43-39	110-10-20	45.60
2-58	-135505.644	-30348.296	-1.500	-1.711	-63.623	95.434500	228-45-35	93-01-56	2.27
2-60	-135507.144	-30350.007	-33.507	32.667	-32.667	1094.573169	135-43-38	86-58-03	46.79
合計					倍面積	209.632033			97.18
					面積	104.8160165			
					坪数	31.70			

面積（倍橫距法）計算書

地番： 2-7画地

測点名	X座標	Y座標	DX	DY	倍橫距	倍面積	方向角	夾角	距離
2-63	-135554.980	-30324.426	0.763	1.410	1.410	1.075830	61-34-50	105-51-11	1.60
G-54	-135554.217	-30323.016	1.487	1.325	4.145	6.163615	41-42-10	160-07-20	1.99
G-55	-135552.730	-30321.691	3.762	1.917	7.387	27.789894	27-00-07	165-17-57	4.22
G-56	-135548.968	-30319.774	4.738	1.540	10.844	51.378872	18-00-21	171-00-14	4.98
G-57	-135544.230	-30318.234	3.579	0.894	13.278	47.521962	14-01-30	176-01-09	3.68
2-61	-135540.651	-30317.340	33.507	-32.667	-18.495	-619.711965	315-43-38	121-42-08	46.79
2-60	-135507.144	-30350.007	-3.126	-3.568	-54.730	171.085980	228-46-40	93-03-02	4.74
K85	-135510.270	-30353.575	-6.165	-6.963	-65.261	402.334065	228-28-43	179-42-03	9.30
KD24	-135516.435	-30360.538	-0.274	-0.309	-72.533	19.874042	228-26-08	179-57-25	0.41
KD25	-135516.709	-30360.847	-0.428	-0.473	-73.315	31.378820	227-51-33	179-25-25	0.63
2-62	-135517.137	-30361.320	-37.843	36.894	-36.894	1396.179642	135-43-39	87-52-06	52.85
合計					倍面積	1535.070757			131.19
					面積	767.5353785			
					坪數	232.17			

面積（倍橫距法）計算書

地番： 2-8画地

測点名	X座標	Y座標	D X	D Y	倍橫距	倍面積	方向角	夾角	距離
2-65	-135557.614	-30330.201	1.376	3.068	3.068	4.221568	65-50-37	110-06-58	3.36
G-52	-135556.238	-30327.133	1.002	2.235	8.371	8.387742	65-51-08	180-00-31	2.44
G-53	-135555.236	-30324.898	0.256	0.472	11.078	2.835968	61-31-33	175-40-25	0.53
2-63	-135554.980	-30324.426	37.843	-36.894	-25.344	-959.092992	315-43-39	74-12-06	52.85
2-62	-135517.137	-30361.320	-0.383	-0.424	-62.662	23.999546	227-54-30	92-10-51	0.57
KD28	-135517.520	-30361.744	-3.612	-4.024	-67.110	242.401320	228-05-18	180-10-48	5.40
2-64	-135521.132	-30365.768	-36.482	35.567	-35.567	1297.555294	135-43-39	87-38-21	50.95
合計					倍面積	620.308446			116.10
					面積	310.1542230			
					坪数	93.82			

面積（倍橫距法）計算書

地 番： 2-9画地

測点名	X座標	Y座標	D X	D Y	倍橫距	倍面積	方向角	夾 角	距 離
2-67	-135560.874	-30342.769	0.051	1.081	1.081	0.055131	87-17-56	131-34-19	1.08
G-49	-135560.823	-30341.688	-0.255	2.124	4.286	-1.092930	96-50-45	189-32-49	2.13
G-50	-135561.078	-30339.564	1.585	5.174	11.584	18.360640	72-58-05	156-07-20	5.41
G-51	-135559.493	-30334.390	1.879	4.189	20.947	39.359413	65-50-28	172-52-23	4.59
2-65	-135557.614	-30330.201	36.482	-35.567	-10.431	-380.543742	315-43-39	69-53-11	50.95
2-64	-135521.132	-30365.768	-2.139	-2.382	-48.380	103.484820	228-04-36	92-20-57	3.20
KD29	-135523.271	-30368.150	-3.269	-3.626	-54.388	177.794372	227-57-50	179-53-14	4.88
K75	-135526.540	-30371.776	-0.432	-0.470	-58.484	25.265088	227-24-45	179-26-55	0.63
KD31	-135526.972	-30372.246	-2.491	-1.147	-60.101	149.711591	204-43-27	157-18-42	2.74
2-66	-135529.463	-30373.393	-31.411	30.624	-30.624	961.930464	135-43-37	111-00-10	43.86
合計					倍面積	1094.324847			119.47
					面積	547.1624235			
					坪 数	165.51			

面積（倍横距法）計算書

地番： 2-10画地

測点名	X座標	Y座標	D X	D Y	倍横距	倍面積	方向角	夾角	距離
2-69	-135563.205	-30349.570	0.770	1.203	1.203	0.926310	57-22-41	101-39-02	1.42
G-46	-135562.435	-30348.367	1.384	3.050	5.456	7.551104	65-35-34	188-12-53	3.34
G-47	-135561.051	-30345.317	0.118	1.280	9.786	1.154748	84-43-59	199-08-25	1.28
G-48	-135560.933	-30344.037	0.059	1.268	12.334	0.727706	87-20-09	182-36-10	1.26
2-67	-135560.874	-30342.769	31.411	-30.624	-17.022	-534.678042	315-43-37	48-23-28	43.86
2-66	-135529.463	-30373.393	-1.160	-0.534	-48.180	55.888800	204-43-07	68-59-30	1.27
KD73	-135530.623	-30373.927	-3.278	-1.714	-50.428	165.302984	207-36-15	182-53-08	3.69
KD89	-135533.901	-30375.641	-1.388	-1.145	-53.287	73.962356	219-31-13	191-54-58	1.79
2-68	-135535.289	-30376.786	-27.916	27.216	-27.216	759.761856	135-43-39	96-12-26	38.98
合計					倍面積	530.597822			96.89
					面積	265.2989110			
					坪数	80.25			

面積（倍橫距法）計算書

地番： 2-11画地

測点名	X座標	Y座標	D X	D Y	倍橫距	倍面積	方向角	夾角	距離
A2-70	-135572.262	-30420.607	-51.776	50.475	50.475	-2613.393600	135-43-44	89-35-05	72.30
A2-71	-135624.038	-30370.132	2.538	0.870	101.820	258.419160	18-55-16	63-11-32	2.68
G-25	-135621.500	-30369.262	3.733	0.091	102.781	383.681473	1-23-47	162-28-31	3.73
G-26	-135617.767	-30369.171	2.335	-0.503	102.369	239.031615	347-50-36	166-26-49	2.38
G-27	-135615.432	-30369.674	0.708	0.234	102.100	72.286800	18-17-21	210-26-45	0.74
G-28	-135614.724	-30369.440	2.016	0.324	102.658	206.958528	9-07-49	170-50-28	2.04
G-29	-135612.708	-30369.116	7.609	-4.516	98.466	749.227794	329-18-38	140-10-49	8.84
G-30	-135605.099	-30373.632	2.463	-1.092	92.858	228.709254	336-05-22	186-46-44	2.69
G-31	-135602.636	-30374.724	1.144	0.238	92.004	105.252576	11-46-36	215-41-14	1.16
G-32	-135601.492	-30374.486	7.592	10.479	102.721	779.857832	54-04-36	222-18-00	12.94
G-33	-135593.900	-30364.007	0.949	2.352	115.552	109.658848	68-01-10	193-56-34	2.53
G-34	-135592.951	-30361.655	2.107	1.839	119.743	252.298501	41-06-53	153-05-43	2.79
G-35	-135590.844	-30359.816	3.098	1.612	123.194	381.655012	27-29-22	166-22-29	3.49
G-36	-135587.746	-30358.204	3.895	1.257	126.063	491.015385	17-53-10	170-23-48	4.09
G-37	-135583.851	-30356.947	6.140	-0.511	126.809	778.607260	355-14-33	157-21-23	6.16
G-38	-135577.711	-30357.458	3.035	0.466	126.764	384.728740	8-43-45	193-29-12	3.07
G-39	-135574.676	-30356.992	0.878	0.134	127.364	111.825592	8-40-39	179-56-54	0.88
G-40	-135573.798	-30356.858	2.720	0.614	128.112	348.464640	12-43-14	184-02-35	2.78
G-41	-135571.078	-30356.244	3.202	0.996	129.722	415.369844	17-16-43	184-33-29	3.35
G-42	-135567.876	-30355.248	2.814	1.570	132.288	372.258432	29-09-30	191-52-47	3.22
G-43	-135565.062	-30353.678	0.905	1.267	135.125	122.288125	54-27-44	205-18-14	1.55
G-44	-135564.157	-30352.411	-0.567	0.466	136.858	-77.598486	140-35-03	266-07-19	0.73
G-45	-135564.724	-30351.945	1.519	2.375	139.699	212.202781	57-23-52	96-48-49	2.81
2-69	-135563.205	-30349.570	27.916	-27.216	114.858	3206.375928	315-43-39	78-19-47	38.98
2-68	-135535.289	-30376.786	-0.501	-0.413	87.229	-43.701729	219-30-02	83-46-23	0.64
KD88	-135535.790	-30377.199	-1.296	-1.189	85.627	-110.972592	222-32-04	183-02-02	1.75
KD87	-135537.086	-30378.388	-2.093	-1.814	82.624	-172.932032	220-54-56	178-22-52	2.76
KD72	-135539.179	-30380.202	-1.123	-1.499	79.311	-89.066253	233-09-38	192-14-42	1.87
K71	-135540.302	-30381.701	-1.595	-2.133	75.679	-120.708005	233-12-43	180-03-05	2.66

地 番 : 2-11画地

測点名	X座標	Y座標	D X	D Y	倍横距	倍面積	方向角	夾 角	距 離
K70	-135541.897	-30383.834	-1.810	-6.616	66.930	-121.143300	254-41-58	201-29-15	6.85
K69	-135543.707	-30390.450	-6.033	-6.469	53.845	-324.846885	226-59-50	152-17-52	8.84
KD33	-135549.740	-30396.919	-6.715	-7.137	40.239	-270.204885	226-44-42	179-44-52	9.79
KD34	-135556.455	-30404.056	-0.336	-0.358	32.744	-11.001984	226-48-56	180-04-14	0.49
KD35	-135556.791	-30404.414	-0.269	-0.285	32.101	-8.635169	226-39-15	179-50-19	0.39
KD36	-135557.060	-30404.699	-6.148	-6.472	25.344	-155.814912	226-28-14	179-48-59	8.92
KD37	-135563.208	-30411.171	-6.797	-7.087	11.785	-80.102645	226-11-48	179-43-34	9.81
KD38	-135570.005	-30418.258	-2.257	-2.349	2.349	-5.301693	226-08-39	179-56-51	3.25
合計					倍面積	6004.749950			243.95
					面 積	3002.3749750			
					坪 数	908.21			

面積（倍橫距法）計算書

地番： 2-12画地

測点名	X座標	Y座標	DX	DY	倍橫距	倍面積	方向角	夾角	距離
A2-70	-135572.262	-30420.607	-0.607	-0.632	-0.632	0.383624	226-09-21	90-25-37	0.87
KD39	-135572.869	-30421.239	-0.882	-0.918	-2.182	1.924524	226-08-45	179-59-24	1.27
KD40	-135573.751	-30422.157	-3.077	-3.180	-6.280	19.323560	225-56-35	179-47-50	4.42
KD41	-135576.828	-30425.337	-4.259	-4.368	-13.828	58.893452	225-43-26	179-46-51	6.10
KD42	-135581.087	-30429.705	-9.489	-9.733	-27.929	265.018281	225-43-38	180-00-12	13.59
KD62	-135590.576	-30439.438	-3.945	-4.003	-41.665	164.368425	225-25-05	179-41-27	5.62
KD63	-135594.521	-30443.441	-5.024	-5.098	-50.766	255.048384	225-25-08	180-00-03	7.15
A2-97	-135599.545	-30448.539	-17.427	17.059	-38.805	676.254735	135-36-41	90-11-33	24.38
A2-96	-135616.972	-30431.480	-16.320	15.975	-5.771	94.182720	135-36-44	180-00-03	22.83
A2-94	-135633.292	-30415.505	-15.318	14.994	25.198	-385.982964	135-36-44	180-00-00	21.43
A2-92	-135648.610	-30400.511	-19.658	-20.371	19.821	-389.641218	226-01-14	270-24-30	28.30
G-2	-135668.268	-30420.882	1.927	3.225	2.675	5.154725	59-08-27	13-07-13	3.75
G-3	-135666.341	-30417.657	1.178	4.049	9.949	11.719922	73-46-42	194-38-15	4.21
G-4	-135665.163	-30413.608	0.244	3.173	17.171	4.189724	85-36-10	191-49-28	3.18
G-5	-135664.919	-30410.435	3.075	3.291	23.635	72.677625	46-56-36	141-20-26	4.50
G-6	-135661.844	-30407.144	1.419	3.488	30.414	43.157466	67-51-44	200-55-08	3.76
G-7	-135660.425	-30403.656	2.961	3.800	37.702	111.635622	52-04-26	164-12-42	4.81
G-8	-135657.464	-30399.856	2.871	2.536	44.038	126.433098	41-27-17	169-22-51	3.83
G-9	-135654.593	-30397.320	4.210	1.803	48.377	203.667170	23-11-02	161-43-45	4.57
G-10	-135650.383	-30395.517	2.922	-0.253	49.927	145.886694	355-03-05	151-52-03	2.93
G-11	-135647.461	-30395.770	5.511	-0.567	49.107	270.628677	354-07-33	179-04-28	5.54
G-12	-135641.950	-30396.337	5.450	0.097	48.637	265.071650	1-01-11	186-53-38	5.45
G-13	-135636.500	-30396.240	1.555	0.474	49.208	76.518440	16-57-09	195-55-58	1.62
G-14	-135634.945	-30395.766	5.541	1.435	51.117	283.239297	14-31-10	177-34-01	5.72
G-15	-135629.404	-30394.331	2.389	1.489	54.041	129.103949	31-56-03	197-24-53	2.81
G-16	-135627.015	-30392.842	0.982	1.302	56.832	55.809024	52-58-32	201-02-29	1.63
G-17	-135626.033	-30391.540	0.262	4.392	62.526	16.381812	86-35-10	213-36-38	4.39
G-18	-135625.771	-30387.148	-0.491	1.918	68.836	-33.798476	104-21-33	197-46-23	1.97
G-19	-135626.262	-30385.230	0.218	3.718	74.472	16.234896	86-38-40	162-17-07	3.72

地 番 : 2-12画地

測点名	X座標	Y座標	D X	D Y	倍横距	倍面積	方向角	夾 角	距 離
G-20	-135626.044	-30381.512	1.401	4.253	82.443	115.502643	71-46-03	165-07-23	4.47
G-21	-135624.643	-30377.259	1.460	1.323	88.019	128.507740	42-10-54	150-24-51	1.97
G-22	-135623.183	-30375.936	-2.965	4.808	94.150	-279.154750	121-39-41	259-28-47	5.64
G-23	-135626.148	-30371.128	1.094	0.648	99.606	108.968964	30-38-21	88-58-40	1.27
G-24	-135625.054	-30370.480	1.016	0.348	100.602	102.211632	18-54-26	168-16-05	1.07
A2-71	-135624.038	-30370.132	51.776	-50.475	50.475	2613.393600	315-43-44	116-49-18	72.30
合計					倍面積	5352.914667			291.07
					面 積	2676.4573335			
					坪 数	809.62			

面積（倍横距法）計算書

地番： 2-23画地

測点名	X座標	Y座標	D X	D Y	倍横距	倍面積	方向角	夾角	距離
A2-99	-135625.650	-30441.197	8.678	9.717	9.717	84.324126	48-14-05	92-37-21	13.02
A2-96	-135616.972	-30431.480	17.427	-17.059	2.375	41.389125	315-36-41	87-22-36	24.38
A2-97	-135599.545	-30448.539	-4.315	-4.379	-19.063	82.256845	225-25-18	89-48-37	6.14
KD43	-135603.860	-30452.918	-0.571	-0.576	-24.018	13.714278	225-14-59	179-49-41	0.81
KD44	-135604.431	-30453.494	-4.051	-4.508	-29.102	117.892202	228-03-23	182-48-24	6.06
A2-98	-135608.482	-30458.002	-17.168	16.805	-16.805	288.508240	135-36-44	87-33-21	24.02
合計					倍面積	628.084816			74.43
					面積	314.0424080			
					坪数	94.99			

面積（倍橫距法）計算書

地番： 2-24画地

測点名	X座標	Y座標	D X	D Y	倍橫距	倍面積	方向角	夾角	距離
A2-95	-135660.553	-30480.286	34.903	39.089	39.089	1364.323367	48-14-14	103-04-40	52.40
A2-99	-135625.650	-30441.197	17.168	-16.805	61.373	1053.651664	315-36-44	87-22-30	24.02
A2-98	-135608.482	-30458.002	-2.565	-2.854	41.714	-106.996410	228-03-10	92-26-26	3.83
D45	-135611.047	-30460.856	-1.337	-1.464	37.396	-49.998452	227-35-46	179-32-36	1.98
KD46	-135612.384	-30462.320	-5.304	-5.896	30.036	-159.310944	228-01-32	180-25-46	7.93
KD47	-135617.688	-30468.216	-6.673	-7.344	16.796	-112.079708	227-44-26	179-42-54	9.92
KD48	-135624.361	-30475.560	-6.027	-6.604	2.848	-17.164896	227-36-56	179-52-30	8.94
KD49	-135630.388	-30482.164	-0.643	-0.705	-4.461	2.868423	227-38-00	180-01-04	0.95
KD50	-135631.031	-30482.869	-0.027	-0.029	-5.195	0.140265	227-02-43	179-24-43	0.03
KD51	-135631.058	-30482.898	-3.161	-3.477	-8.701	27.503861	227-43-32	180-40-49	4.69
KD52	-135634.219	-30486.375	-3.258	-3.585	-15.763	51.355854	227-44-09	180-00-37	4.84
KD53	-135637.477	-30489.960	-0.270	-0.297	-19.645	5.304150	227-43-35	179-59-26	0.40
KD54	-135637.747	-30490.257	-6.038	-8.038	-27.980	168.943240	233-05-12	185-21-37	10.05
D55	-135643.785	-30498.295	-0.088	-0.106	-36.124	3.178912	230-18-03	177-12-51	0.13
A2-1	-135643.873	-30498.401	-5.915	5.314	-30.916	182.868140	138-03-49	87-45-46	7.95
A2-2	-135649.788	-30493.087	-1.043	0.955	-24.647	25.706821	137-31-19	179-27-30	1.41
A2-3	-135650.831	-30492.132	-1.007	0.994	-22.698	22.856886	135-22-20	177-51-01	1.41
A2-4	-135651.838	-30491.138	-0.986	1.012	-20.692	20.402312	134-15-16	178-52-56	1.41
A2-5	-135652.824	-30490.126	-0.978	1.026	-18.654	18.243612	133-37-40	179-22-24	1.41
A2-6	-135653.802	-30489.100	-0.937	1.058	-16.570	15.526090	131-31-45	177-54-05	1.41
A2-7	-135654.739	-30488.042	-0.909	1.084	-14.428	13.115052	129-58-55	178-27-10	1.41
A2-8	-135655.648	-30486.958	-0.893	1.099	-12.245	10.934785	129-06-12	179-07-17	1.41
A2-9	-135656.541	-30485.859	-0.852	1.131	-10.015	8.532780	126-58-59	177-52-47	1.41
A2-10	-135657.393	-30484.728	-0.835	1.141	-7.743	6.465405	126-11-50	179-12-51	1.41
A2-11	-135658.228	-30483.587	-2.325	3.301	-3.301	7.674825	125-09-34	178-57-44	4.03
合計						倍面積 面積 坪数	2564.046034 1282.0230170 387.81		154.78

面積（倍橫距法）計算書

地番： 2-25画地

測点名	X座標	Y座標	D X	D Y	倍橫距	倍面積	方向角	夾角	距離
A2-93	-135674.227	-30461.349	40.935	45.844	45.844	1876.624140	48-14-15	98-14-21	61.46
A2-94	-135633.292	-30415.505	16.320	-15.975	75.713	1235.636160	315-36-44	87-22-29	22.83
A2-96	-135616.972	-30431.480	-8.678	-9.717	50.021	-434.082238	228-14-05	92-37-21	13.02
A2-99	-135625.650	-30441.197	-34.903	-39.089	1.215	-42.407145	228-14-14	180-00-09	52.40
A2-95	-135660.553	-30480.286	-9.862	14.003	-23.871	235.415802	125-09-21	76-55-07	17.12
A2-12	-135670.415	-30466.283	-1.002	1.383	-8.485	8.501970	125-55-26	180-46-05	1.70
A2-13	-135671.417	-30464.900	-1.034	1.359	-5.743	5.938262	127-15-57	181-20-31	1.70
A2-14	-135672.451	-30463.541	-1.061	1.340	-3.044	3.229684	128-22-19	181-06-22	1.70
A2-15	-135673.512	-30462.201	-0.715	0.852	-0.852	0.609180	129-59-54	181-37-35	1.11
合計					倍面積	2889.465815			173.04
					面積	1444.7329075			
					坪數	437.03			

面積 (倍 橫 距 法) 計 算 書

地 番 : 2-26画地

測点名	X座標	Y座標	D X	D Y	倍橫距	倍面積	方向角	夾 角	距 離
A2-29	-135690.233	-30447.134	11.915	16.265	16.265	193.797475	53-46-31	86-42-11	20.16
A2-30	-135678.318	-30430.869	-1.112	0.723	33.253	-36.977336	146-58-08	273-11-37	1.32
AG-77	-135679.430	-30430.146	5.663	4.355	38.331	217.068453	37-33-41	70-35-33	7.14
G-1	-135673.767	-30425.791	5.499	4.909	47.595	261.724905	41-45-20	184-11-39	7.37
G-2	-135668.268	-30420.882	19.658	20.371	72.875	1432.576750	46-01-14	184-15-54	28.30
A2-92	-135648.610	-30400.511	15.318	-14.994	78.252	1198.664136	315-36-44	89-35-30	21.43
A2-94	-135633.292	-30415.505	-40.935	-45.844	17.414	-712.842090	228-14-15	92-37-31	61.46
A2-93	-135674.227	-30461.349	-0.386	0.459	-27.971	10.796806	130-02-24	81-48-09	0.59
A2-16	-135674.613	-30460.890	-1.119	1.291	-26.221	29.341299	130-55-45	180-53-21	1.70
A2-17	-135675.732	-30459.599	-1.146	1.269	-23.661	27.115506	132-05-04	181-09-19	1.70
A2-18	-135676.878	-30458.330	-1.180	1.238	-21.154	24.961720	133-37-33	181-32-29	1.71
A2-19	-135678.058	-30457.092	-1.224	1.193	-18.723	22.916952	135-44-05	182-06-32	1.70
A2-20	-135679.282	-30455.899	-1.251	1.168	-16.362	20.468862	136-57-55	181-13-50	1.71
A2-21	-135680.533	-30454.731	-1.254	1.159	-14.035	17.599890	137-15-16	180-17-21	1.70
A2-22	-135681.787	-30453.572	-1.300	1.109	-11.767	15.297100	139-32-00	182-16-44	1.70
A2-23	-135683.087	-30452.463	-1.312	1.096	-9.562	12.545344	140-07-33	180-35-33	1.70
A2-24	-135684.399	-30451.367	-1.337	1.065	-7.401	9.895137	141-27-38	181-20-05	1.70
A2-25	-135685.736	-30450.302	-1.379	1.015	-5.321	7.337659	143-38-44	182-11-06	1.71
A2-26	-135687.115	-30449.287	-1.390	0.990	-3.316	4.609240	144-32-25	180-53-41	1.70
A2-27	-135688.505	-30448.297	-1.413	0.959	-1.367	1.931571	145-50-07	181-17-42	1.70
A2-28	-135689.918	-30447.338	-0.315	0.204	-0.204	0.064260	147-04-20	181-14-13	0.37
合計						倍面積 面積 坪 数	2758.893639 1379.4468195 417.28		168.57

面積（倍橫距法）計算書

地番： 3-1画地

測点名	X座標	Y座標	D X	D Y	倍橫距	倍面積	方向角	夾角	距離
3-3	-135546.027	-30245.676	14.387	38.657	38.657	556.158259	69-35-10	36-25-42	41.24
KM2	-135531.640	-30207.019	6.532	5.594	82.908	541.555056	40-34-36	150-59-26	8.59
KM1	-135525.108	-30201.425	2.995	0.799	89.301	267.456495	14-56-15	154-21-39	3.09
KM21	-135522.113	-30200.626	4.621	-0.857	89.243	412.391903	349-29-36	154-33-21	4.69
KM20	-135517.492	-30201.483	2.785	-2.587	85.799	238.950215	317-06-39	147-37-03	3.80
KM19	-135514.707	-30204.070	2.139	-3.263	79.949	171.010911	303-14-46	166-08-07	3.90
KM18	-135512.568	-30207.333	3.795	-14.826	61.860	234.758700	284-21-28	161-06-42	15.30
KM17	-135508.773	-30222.159	-1.302	-2.704	44.330	-57.717660	244-17-20	139-55-52	3.00
2-100	-135510.075	-30224.863	-2.283	1.184	42.810	-97.735230	152-35-17	88-17-57	2.57
3-2	-135512.358	-30223.679	-33.669	-21.997	21.997	-740.616993	213-09-28	240-34-11	40.21
合計					倍面積	1526.211656			126.39
					面積	763.1058280			
					坪数	230.83			

面積 (倍 橫 距 法) 計 算 書

地 番 : 3-2画地

測点名	X座標	Y座標	DX	DY	倍橫距	倍面積	方向角	夾角	距離
3-4	-135554.823	-30262.503	1.135	1.538	1.538	1.745630	53-34-25	97-50-48	1.91
KM10	-135553.688	-30260.965	3.977	5.391	8.467	33.673259	53-35-00	180-00-35	6.69
KM9	-135549.711	-30255.574	3.684	9.898	23.756	87.517104	69-35-06	196-00-06	10.56
3-3	-135546.027	-30245.676	33.669	21.997	55.651	1873.713519	33-09-28	143-34-22	40.21
3-2	-135512.358	-30223.679	2.283	-1.184	76.464	174.567312	332-35-17	119-25-49	2.57
2-100	-135510.075	-30224.863	-6.131	-12.731	62.549	-383.487919	244-17-08	91-41-51	14.13
H344	-135516.206	-30237.594	-4.029	-10.694	39.124	-157.630596	249-21-21	185-04-13	11.42
H343	-135520.235	-30248.288	-3.429	-9.486	18.944	-64.958976	250-07-34	180-46-13	10.08
H338	-135523.664	-30257.774	0.166	-7.706	1.752	0.290832	271-14-03	201-06-29	7.70
H337	-135523.498	-30265.480	0.855	-7.099	-13.053	-11.160315	276-52-03	185-38-00	7.15
H422	-135522.643	-30272.579	0.690	-5.741	-25.893	-17.866170	276-51-12	179-59-09	5.78
H336	-135521.953	-30278.320	2.267	-5.981	-37.615	-85.273205	290-45-30	193-54-18	6.39
H335	-135519.686	-30284.301	5.816	-10.906	-54.502	-316.983632	298-04-13	187-18-43	12.35
H423	-135513.870	-30295.207	0.994	-1.862	-67.270	-66.866380	298-05-41	180-01-28	2.11
H323	-135512.876	-30297.069	-0.240	-2.037	-71.169	17.080560	263-16-49	145-11-08	2.05
H339	-135513.116	-30299.106	1.766	-3.859	-77.065	-136.096790	294-35-25	211-18-36	4.24
H327	-135511.350	-30302.965	1.905	-3.270	-84.194	-160.389570	300-13-25	185-38-00	3.78
H326	-135509.445	-30306.235	0.042	-0.550	-88.014	-3.696588	274-22-01	154-08-36	0.55
2-53	-135509.403	-30306.785	-45.420	44.282	-44.282	2011.288440	135-43-37	41-21-36	63.43
合計					倍面積	2795.466515			213.10
					面積	1397.7332575			
					坪數	422.81			

面積（倍橫距法）計算書

地番： 3-3画地

測点名	X座標	Y座標	D X	D Y	倍橫距	倍面積	方向角	夾角	距離
3-5	-135565.770	-30274.340	6.056	5.206	5.206	31.527536	40-41-02	84-57-24	7.98
S17	-135559.714	-30269.134	4.891	6.631	17.043	83.357313	53-35-16	192-54-14	8.23
3-4	-135554.823	-30262.503	45.420	-44.282	-20.608	-936.015360	315-43-37	82-08-21	63.43
2-53	-135509.403	-30306.785	-5.571	1.957	-62.933	350.599743	160-38-40	24-55-03	5.90
G-64	-135514.974	-30304.828	-1.107	0.055	-60.921	67.439547	177-09-20	196-30-40	1.10
G-63	-135516.081	-30304.773	-2.558	-0.411	-61.277	156.746566	189-07-40	191-58-20	2.59
G-62	-135518.639	-30305.184	-4.713	-1.404	-63.092	297.352596	196-35-20	187-27-40	4.91
G-61	-135523.352	-30306.588	-5.474	-3.770	-68.266	373.688084	214-33-20	197-58-00	6.64
2-55	-135528.826	-30310.358	-36.944	36.018	-36.018	1330.648992	135-43-38	101-10-18	51.59
合計					倍面積	1755.345017			152.37
					面積	877.6725085			
					坪数	265.49			

面積（倍横距法）計算書

地番： 3-4画地

測点名	X座標	Y座標	D X	D Y	倍横距	倍面積	方向角	夾角	距離
3-6	-135570.795	-30278.279	1.488	0.898	0.898	1.336224	31-06-39	75-22-58	1.73
S18	-135569.307	-30277.381	3.537	3.041	4.837	17.108469	40-41-16	189-34-37	4.66
3-5	-135565.770	-30274.340	36.944	-36.018	-28.140	-1039.604160	315-43-38	95-02-22	51.59
2-55	-135528.826	-30310.358	-1.025	-0.705	-64.863	66.484575	214-31-13	78-47-35	1.24
G-60	-135529.851	-30311.063	-4.324	-2.917	-68.485	296.129140	214-00-14	179-29-01	5.21
2-57	-135534.175	-30313.980	-36.620	35.701	-35.701	1307.370620	135-43-41	101-43-27	51.14
合計					倍面積	648.824868			115.57
					面積	324.4124340			
					坪数	98.13			

面積（倍横距法）計算書

地番： 3-5画地

測点名	X座標	Y座標	D X	D Y	倍横距	倍面積	方向角	夾角	距離
3-7	-135575.140	-30280.543	1.638	0.630	0.630	1.031940	21-02-15	65-18-36	1.75
S19	-135573.502	-30279.913	2.707	1.634	2.894	7.834058	31-06-58	190-04-43	3.16
3-6	-135570.795	-30278.279	36.620	-35.701	-31.173	-1141.555260	315-43-41	104-36-43	51.14
2-57	-135534.175	-30313.980	-2.584	-1.743	-68.617	177.306328	214-00-04	78-16-23	3.11
G-59	-135536.759	-30315.723	-1.540	-0.737	-71.097	109.489380	205-34-28	171-34-24	1.70
2-59	-135538.299	-30316.460	-36.841	35.917	-35.917	1323.218197	135-43-39	110-09-11	51.45
合計					倍面積	477.324643			112.31
					面積	238.6623215			
					坪数	72.19			

面積（倍横距法）計算書

地番：3-6画地

測点名	X座標	Y座標	DX	DY	倍横距	倍面積	方向角	夾角	距離
3-8	-135577.474	-30281.440	2.334	0.897	0.897	2.093598	21-01-22	65-17-44	2.50
3-7	-135575.140	-30280.543	36.841	-35.917	-34.123	-1257.125443	315-43-39	114-42-17	51.45
2-59	-135538.299	-30316.460	-1.282	-0.613	-70.653	90.577146	205-33-19	69-49-40	1.42
G-58	-135539.581	-30317.073	-1.070	-0.267	-71.533	76.540310	194-00-40	168-27-21	1.10
2-61	-135540.651	-30317.340	-36.823	35.900	-35.900	1321.945700	135-43-38	121-42-58	51.42
合計					倍面積	234.031311			107.89
					面積	117.0156555			
					坪数	35.39			

面積（倍橫距法）計算書

地番：3-7画地

測点名	X座標	Y座標	DX	DY	倍橫距	倍面積	方向角	夾角	距離
3-9	-135594.068	-30286.319	3.848	2.754	2.754	10.597392	35-35-28	79-51-47	4.73
S3	-135590.220	-30283.565	8.648	1.032	6.540	56.557920	6-48-19	151-12-51	8.70
S2	-135581.572	-30282.533	1.816	0.216	7.788	14.143008	6-46-59	179-58-40	1.82
S1	-135579.756	-30282.317	2.282	0.877	8.881	20.266442	21-01-21	194-14-22	2.44
3-8	-135577.474	-30281.440	36.823	-35.900	-26.142	-962.626866	315-43-38	114-42-17	51.42
2-61	-135540.651	-30317.340	-3.579	-0.894	-62.936	225.247944	194-01-30	58-17-52	3.68
G-57	-135544.230	-30318.234	-4.738	-1.540	-65.370	309.723060	198-00-21	183-58-51	4.98
G-56	-135548.968	-30319.774	-3.762	-1.917	-68.827	258.927174	207-00-07	188-59-46	4.22
G-55	-135552.730	-30321.691	-1.487	-1.325	-72.069	107.166603	221-42-10	194-42-03	1.99
G-54	-135554.217	-30323.016	-0.763	-1.410	-74.804	57.075452	241-34-50	199-52-40	1.60
2-63	-135554.980	-30324.426	-39.088	38.107	-38.107	1489.526416	135-43-41	74-08-51	54.58
合計						倍面積 面積 坪数			140.16
						1586.604545			
						793.3022725			
						239.97			

面積（倍横距法）計算書

地番：3-8画地

測点名	X座標	Y座標	D X	D Y	倍横距	倍面積	方向角	夾角	距離
3-10	-135597.534	-30291.282	1.473	1.846	1.846	2.719158	51-24-44	95-41-05	2.36
S5	-135596.061	-30289.436	1.828	2.999	6.691	12.231148	58-38-10	187-13-26	3.51
S4	-135594.233	-30286.437	0.165	0.118	9.808	1.618320	35-34-14	156-56-04	0.20
3-9	-135594.068	-30286.319	39.088	-38.107	-28.181	-1101.538928	315-43-41	100-09-27	54.58
2-63	-135554.980	-30324.426	-0.256	-0.472	-66.760	17.090560	241-31-33	105-47-52	0.53
G-53	-135555.236	-30324.898	-1.002	-2.235	-69.467	69.605934	245-51-08	184-19-35	2.44
G-52	-135556.238	-30327.133	-1.376	-3.068	-74.770	102.883520	245-50-37	179-59-29	3.36
2-65	-135557.614	-30330.201	-39.920	38.919	-38.919	1553.646480	135-43-39	69-53-02	55.75
合計					倍面積	658.256192			122.73
					面積	329.1280960			
					坪数	99.56			

面積（倍横距法）計算書

地番：3-9画地

測点名	X座標	Y座標	D X	D Y	倍横距	倍面積	方向角	夾角	距離
3-11	-135606.227	-30298.553	4.424	2.380	2.380	10.529120	28-16-45	72-33-07	5.02
S7	-135601.803	-30296.173	3.494	3.919	8.679	30.324426	48-16-53	200-00-08	5.25
S6	-135598.309	-30292.254	0.775	0.972	13.570	10.516750	51-26-02	183-09-09	1.24
3-10	-135597.534	-30291.282	39.920	-38.919	-24.377	-973.129840	315-43-39	84-17-37	55.75
2-65	-135557.614	-30330.201	-1.879	-4.189	-67.485	126.804315	245-50-28	110-06-49	4.59
G-51	-135559.493	-30334.390	-1.585	-5.174	-76.848	121.804080	252-58-05	187-07-37	5.41
G-50	-135561.078	-30339.564	0.255	-2.124	-84.146	-21.457230	276-50-45	203-52-40	2.13
G-49	-135560.823	-30341.688	-0.051	-1.081	-87.351	4.454901	267-17-56	170-27-11	1.08
2-67	-135560.874	-30342.769	-45.353	44.216	-44.216	2005.328248	135-43-38	48-25-42	63.33
合計					倍面積	1315.174770			143.80
					面積	657.5873850			
					坪数	198.92			

面積（倍橫距法）計算書

地番： 3-10画地

測点名	X座標	Y座標	DX	DY	倍橫距	倍面積	方向角	夾角	距離
3-12	-135612.419	-30301.590	3.099	1.374	1.374	4.258026	23-54-40	68-11-01	3.38
S9	-135609.320	-30300.216	0.279	0.150	2.898	0.808542	28-15-50	184-21-10	0.31
S8	-135609.041	-30300.066	2.814	1.513	4.561	12.834654	28-15-56	180-00-06	3.19
3-11	-135606.227	-30298.553	45.353	-44.216	-38.142	-1729.854126	315-43-38	107-27-42	63.33
2-67	-135560.874	-30342.769	-0.059	-1.268	-83.626	4.933934	267-20-09	131-36-31	1.26
G-48	-135560.933	-30344.037	-0.118	-1.280	-86.174	10.168532	264-43-59	177-23-50	1.28
G-47	-135561.051	-30345.317	-1.384	-3.050	-90.504	125.257536	245-35-34	160-51-35	3.34
G-46	-135562.435	-30348.367	-0.770	-1.203	-94.757	72.962890	237-22-41	171-47-07	1.42
2-69	-135563.205	-30349.570	-49.214	47.980	-47.980	2361.287720	135-43-39	78-20-58	68.73
合計					倍面積	862.657708			146.24
					面積	431.3288540			
					坪数	130.47			

面積（倍橫距法）計算書

地番： 3-11画地

測点名	X座標	Y座標	D X	D Y	倍橫距	倍面積	方向角	夾角	距離
A3-13	-135655.615	-30339.346	0.453	0.364	0.364	0.164892	38-46-59	83-03-23	0.58
SP3	-135655.162	-30338.982	13.031	4.281	5.009	65.272279	18-11-12	159-24-13	13.71
SP2	-135642.131	-30334.701	0.670	16.024	25.314	16.960380	87-36-21	249-25-09	16.03
SP1	-135641.461	-30318.677	0.411	0.084	41.422	17.024442	11-33-04	103-56-43	0.41
S16	-135641.050	-30318.593	6.150	1.262	42.768	263.023200	11-35-47	180-02-43	6.27
S15	-135634.900	-30317.331	4.861	2.353	46.383	225.467763	25-49-47	194-14-00	5.40
S14	-135630.039	-30314.978	4.655	2.534	51.270	238.661850	28-33-44	182-43-57	5.30
S13	-135625.384	-30312.444	2.461	2.627	56.431	138.876691	46-52-07	198-18-23	3.59
S12	-135622.923	-30309.817	4.967	4.811	63.869	317.237323	44-05-09	177-13-02	6.91
S11	-135617.956	-30305.006	4.964	3.163	71.843	356.628652	32-30-17	168-25-08	5.88
S10	-135612.992	-30301.843	0.573	0.253	75.259	43.123407	23-49-23	171-19-06	0.62
3-12	-135612.419	-30301.590	49.214	-47.980	27.532	1354.959848	315-43-39	111-54-16	68.73
2-69	-135563.205	-30349.570	-1.519	-2.375	-22.823	34.668137	237-23-52	101-40-13	2.81
G-45	-135564.724	-30351.945	0.567	-0.466	-25.664	-14.551488	320-35-03	263-11-11	0.73
G-44	-135564.157	-30352.411	-0.905	-1.267	-27.397	24.794285	234-27-44	93-52-41	1.55
G-43	-135565.062	-30353.678	-2.814	-1.570	-30.234	85.078476	209-09-30	154-41-46	3.22
G-42	-135567.876	-30355.248	-3.202	-0.996	-32.800	105.025600	197-16-43	168-07-13	3.35
G-41	-135571.078	-30356.244	-2.720	-0.614	-34.410	93.595200	192-43-14	175-26-31	2.78
G-40	-135573.798	-30356.858	-0.878	-0.134	-35.158	30.868724	188-40-39	175-57-25	0.88
G-39	-135574.676	-30356.992	-3.035	-0.466	-35.758	108.525530	188-43-45	180-03-06	3.07
G-38	-135577.711	-30357.458	-6.140	0.511	-35.713	219.277820	175-14-33	166-30-48	6.16
G-37	-135583.851	-30356.947	-3.895	-1.257	-36.459	142.007805	197-53-10	202-38-37	4.09
G-36	-135587.746	-30358.204	-3.098	-1.612	-39.328	121.838144	207-29-22	189-36-12	3.49
G-35	-135590.844	-30359.816	-2.107	-1.839	-42.779	90.135353	221-06-53	193-37-31	2.79
G-34	-135592.951	-30361.655	-0.949	-2.352	-46.970	44.574530	248-01-10	206-54-17	2.53
G-33	-135593.900	-30364.007	-7.592	-10.479	-59.801	454.009192	234-04-36	166-03-26	12.94
G-32	-135601.492	-30374.486	-1.144	-0.238	-70.518	80.672592	191-46-36	137-42-00	1.16
G-31	-135602.636	-30374.724	-2.463	1.092	-69.664	171.582432	156-05-22	144-18-46	2.69
G-30	-135605.099	-30373.632	-7.609	4.516	-64.056	487.402104	149-18-38	173-13-16	8.84

地 番 : 3-11画地

測点名	X座標	Y座標	D X	D Y	倍横距	倍面積	方向角	夾 角	距 離
G-29	-135612.708	-30369.116	-2.016	-0.324	-59.864	120.685824	189-07-49	219-49-11	2.04
G-28	-135614.724	-30369.440	-0.708	-0.234	-60.422	42.778776	198-17-21	189-09-32	0.74
G-27	-135615.432	-30369.674	-2.335	0.503	-60.153	140.457255	167-50-36	149-33-15	2.38
G-26	-135617.767	-30369.171	-3.733	-0.091	-59.741	223.013153	181-23-47	193-33-11	3.73
G-25	-135621.500	-30369.262	-2.538	-0.870	-60.702	154.061676	198-55-16	197-31-29	2.68
A2-71	-135624.038	-30370.132	-31.577	30.786	-30.786	972.129522	135-43-36	116-48-20	44.10
合計					倍面積	6970.031369			252.18
					面 積	3485.0156845			
					坪 数	1054.21			

面積（倍橫距法）計算書

地番： 3-12画地

測点名	X座標	Y座標	D X	D Y	倍橫距	倍面積	方向角	夾角	距離
A3-1	-135705.191	-30413.385	4.414	3.577	3.577	15.788878	39-01-14	72-04-12	5.68
SP14	-135700.777	-30409.808	4.741	7.829	14.983	71.034403	58-48-08	199-46-54	9.15
SP13	-135696.036	-30401.979	-0.978	14.793	37.605	-36.777690	93-46-57	214-58-49	14.82
SP12	-135697.014	-30387.186	0.980	5.477	57.875	56.717500	79-51-19	166-04-22	5.56
SP11	-135696.034	-30381.709	8.277	11.668	75.020	620.940540	54-38-56	154-47-37	14.30
SP10	-135687.757	-30370.041	9.753	7.625	94.313	919.834689	38-01-07	163-22-11	12.37
SP9	-135678.004	-30362.416	5.147	13.880	115.818	596.115246	69-39-15	211-38-08	14.80
SP8	-135672.857	-30348.536	1.336	4.863	134.561	179.773496	74-38-18	184-59-03	5.04
SP7	-135671.521	-30343.673	1.738	1.231	140.655	244.458390	35-18-34	140-40-16	2.12
SP6	-135669.783	-30342.442	3.952	-2.718	139.168	549.991936	325-28-54	110-10-20	4.79
SP5	-135665.831	-30345.160	4.314	1.073	137.523	593.274222	13-58-03	228-29-09	4.44
SP4	-135661.517	-30344.087	5.902	4.741	143.337	845.974974	38-46-28	204-48-25	7.57
A3-13	-135655.615	-30339.346	31.577	-30.786	117.292	3703.729484	315-43-36	96-57-08	44.10
A2-71	-135624.038	-30370.132	-1.016	-0.348	86.158	-87.536528	198-54-26	63-10-50	1.07
G-24	-135625.054	-30370.480	-1.094	-0.648	85.162	-93.167228	210-38-21	191-43-55	1.27
G-23	-135626.148	-30371.128	2.965	-4.808	79.706	236.328290	301-39-41	271-01-20	5.64
G-22	-135623.183	-30375.936	-1.460	-1.323	73.575	-107.419500	222-10-54	100-31-13	1.97
G-21	-135624.643	-30377.259	-1.401	-4.253	67.999	-95.266599	251-46-03	209-35-09	4.47
G-20	-135626.044	-30381.512	-0.218	-3.718	60.028	-13.086104	266-38-40	194-52-37	3.72
G-19	-135626.262	-30385.230	0.491	-1.918	54.392	26.706472	284-21-33	197-42-53	1.97
G-18	-135625.771	-30387.148	-0.262	-4.392	48.082	-12.597484	266-35-10	162-13-37	4.39
G-17	-135626.033	-30391.540	-0.982	-1.302	42.388	-41.625016	232-58-32	146-23-22	1.63
G-16	-135627.015	-30392.842	-2.389	-1.489	39.597	-94.597233	211-56-03	158-57-31	2.81
G-15	-135629.404	-30394.331	-5.541	-1.435	36.673	-203.205093	194-31-10	162-35-07	5.72
G-14	-135634.945	-30395.766	-1.555	-0.474	34.764	-54.058020	196-57-09	182-25-59	1.62
G-13	-135636.500	-30396.240	-5.450	-0.097	34.193	-186.351850	181-01-11	164-04-02	5.45
G-12	-135641.950	-30396.337	-5.511	0.567	34.663	-191.027793	174-07-33	173-06-22	5.54
G-11	-135647.461	-30395.770	-2.922	0.253	35.483	-103.681326	175-03-05	180-55-32	2.93
G-10	-135650.383	-30395.517	-4.210	-1.803	33.933	-142.857930	203-11-02	208-07-57	4.57

地 番 : 3-12画地

測点名	X座標	Y座標	D X	D Y	倍横距	倍面積	方向角	夾 角	距 離
G-9	-135654.593	-30397.320	-2.871	-2.536	29.594	-84.964374	221-27-17	198-16-15	3.83
G-8	-135657.464	-30399.856	-2.961	-3.800	23.258	-68.866938	232-04-26	190-37-09	4.81
G-7	-135660.425	-30403.656	-1.419	-3.488	15.970	-22.661430	247-51-44	195-47-18	3.76
G-6	-135661.844	-30407.144	-3.075	-3.291	9.191	-28.262325	226-56-36	159-04-52	4.50
G-5	-135664.919	-30410.435	-0.244	-3.173	2.727	-0.665388	265-36-10	218-39-34	3.18
G-4	-135665.163	-30413.608	-1.178	-4.049	-4.495	5.295110	253-46-42	168-10-32	4.21
G-3	-135666.341	-30417.657	-1.927	-3.225	-11.769	22.678863	239-08-27	165-21-45	3.75
G-2	-135668.268	-30420.882	-5.499	-4.909	-19.903	109.446597	221-45-20	162-36-53	7.37
G-1	-135673.767	-30425.791	-5.663	-4.355	-29.167	165.172721	217-33-41	175-48-21	7.14
AG-77	-135679.430	-30430.146	-25.761	16.761	-16.761	431.780121	146-57-02	109-23-21	30.73
合計					倍面積	7726.366083			272.79
					面 積	3863.1830415			
					坪 数	1168.61			

面積（倍橫距法）計算書

地番： 4-1画地

測点名	X座標	Y座標	D X	D Y	倍橫距	倍面積	方向角	夾角	距離
B12	-135707.301	-30449.324	4.260	0.824	0.824	3.510240	10-56-51	93-05-06	4.33
B13	-135703.041	-30448.500	0.953	0.209	1.857	1.769721	12-22-10	181-25-19	0.97
A4-1	-135702.088	-30448.291	0.312	-0.148	1.918	0.598416	334-37-20	142-15-10	0.34
A4-2	-135701.776	-30448.439	1.402	-0.681	1.089	1.526778	334-05-33	179-28-13	1.55
A4-3	-135700.374	-30449.120	1.377	-0.709	-0.301	-0.414477	332-45-24	178-39-51	1.54
A4-4	-135698.997	-30449.829	1.352	-0.761	-1.771	-2.394392	330-37-34	177-52-10	1.55
A4-5	-135697.645	-30450.590	1.341	-0.770	-3.302	-4.427982	330-08-08	179-30-34	1.54
A4-6	-135696.304	-30451.360	1.323	-0.818	-4.890	-6.469470	328-16-19	178-08-11	1.55
A4-7	-135694.981	-30452.178	1.302	-0.843	-6.551	-8.529402	327-04-42	178-48-23	1.55
A4-8	-135693.679	-30453.021	1.286	-0.863	-8.257	-10.618502	326-08-08	179-03-26	1.54
A4-9	-135692.393	-30453.884	1.262	-0.903	-10.023	-12.649026	324-24-54	178-16-46	1.55
A4-10	-135691.131	-30454.787	1.245	-0.922	-11.848	-14.750760	323-28-40	179-03-46	1.54
A4-11	-135689.886	-30455.709	1.214	-0.969	-13.739	-16.679146	321-24-13	177-55-33	1.55
A4-12	-135688.672	-30456.678	1.198	-0.981	-15.689	-18.795422	320-40-50	179-16-37	1.54
A4-13	-135687.474	-30457.659	1.177	-1.012	-17.682	-20.811714	319-19-01	178-38-11	1.55
A4-14	-135686.297	-30458.671	1.141	-1.050	-19.744	-22.527904	317-22-42	178-03-41	1.55
A4-15	-135685.156	-30459.721	1.130	-1.065	-21.859	-24.700670	316-41-46	179-19-04	1.55
A4-16	-135684.026	-30460.786	1.102	-1.088	-24.012	-26.461224	315-21-59	178-40-13	1.54
A4-17	-135682.924	-30461.874	1.073	-1.117	-26.217	-28.130841	313-50-56	178-28-57	1.54
A4-18	-135681.851	-30462.991	1.047	-1.144	-28.478	-29.816466	312-27-54	178-36-58	1.55
A4-19	-135680.804	-30464.135	1.021	-1.172	-30.794	-31.440674	311-03-49	178-35-55	1.55
A4-20	-135679.783	-30465.307	0.997	-1.190	-33.156	-33.056532	309-57-15	178-53-26	1.55
A4-21	-135678.786	-30466.497	0.961	-1.216	-35.562	-34.175082	308-19-09	178-21-54	1.54
A4-22	-135677.825	-30467.713	0.938	-1.231	-38.009	-35.652442	307-18-24	178-59-15	1.54
A4-23	-135676.887	-30468.944	0.909	-1.262	-40.502	-36.816318	305-45-53	178-27-29	1.55
A4-24	-135675.978	-30470.206	3.670	-5.207	-46.971	-172.383570	305-10-34	179-24-41	6.37
A4-37	-135672.308	-30475.413	-20.513	-21.624	-73.802	1513.900426	226-30-42	101-20-08	29.80
A4-36	-135692.821	-30497.037	-2.829	7.420	-88.006	248.968974	110-52-14	64-21-32	7.94
B8	-135695.650	-30489.617	-3.123	15.182	-65.404	204.256692	101-37-26	170-45-12	15.49

地番： 4-1画地

測点名	X座標	Y座標	D X	D Y	倍横距	倍面積	方向角	夾角	距離
B9	-135698.773	-30474.435	-3.124	9.413	-40.809	127.487316	108-21-36	186-44-10	9.91
B10	-135701.897	-30465.022	-4.162	6.704	-24.692	102.768104	121-49-59	193-28-23	7.89
B11	-135706.059	-30458.318	-1.242	8.994	-8.994	11.170548	97-51-45	156-01-46	9.07
合計					倍面積	1624.255199			126.12
					面積	812.1275995			
					坪数	245.66			

面積 (倍 橫 距 法) 計 算 書

地 番 : 4-2画地

測点名	X座標	Y座標	D X	D Y	倍橫距	倍面積	方向角	夾 角	距 離
A4-36	-135692.821	-30497.037	20.513	21.624	21.624	443.573112	46-30-42	115-38-28	29.80
A4-37	-135672.308	-30475.413	8.521	-12.092	31.156	265.480276	305-10-19	78-39-37	14.79
A4-25	-135663.787	-30487.505	0.930	-1.283	17.781	16.536330	305-56-13	180-45-54	1.58
A4-26	-135662.857	-30488.788	0.958	-1.260	15.238	14.598004	307-14-47	181-18-34	1.58
A4-27	-135661.899	-30490.048	0.994	-1.233	12.745	12.668530	308-52-28	181-37-41	1.58
A4-28	-135660.905	-30491.281	1.018	-1.221	10.291	10.476238	309-49-10	180-56-42	1.58
A4-29	-135659.887	-30492.502	1.054	-1.181	7.889	8.315006	311-44-52	181-55-42	1.58
A4-30	-135658.833	-30493.683	1.081	-1.160	5.548	5.997388	312-58-52	181-14-00	1.58
A4-31	-135657.752	-30494.843	1.116	-1.126	3.262	3.640392	314-44-40	181-45-48	1.58
A4-32	-135656.636	-30495.969	1.135	-1.107	1.029	1.167915	315-42-56	180-58-16	1.58
A4-33	-135655.501	-30497.076	1.166	-1.075	-1.153	-1.344398	317-19-31	181-36-35	1.58
A4-34	-135654.335	-30498.151	6.106	-5.490	-7.718	-47.126108	318-02-27	180-42-56	8.21
A4-35	-135648.229	-30503.641	-1.952	-2.348	-15.556	30.365312	230-15-42	92-13-15	3.05
D57	-135650.181	-30505.989	-7.111	-6.983	-24.887	176.971457	224-28-47	174-13-05	9.96
K42	-135657.292	-30512.972	-7.123	-6.984	-38.854	276.757042	224-26-08	179-57-21	9.97
D58	-135664.415	-30519.956	-7.134	-6.987	-52.825	376.853550	224-24-13	179-58-05	9.98
D59	-135671.549	-30526.943	-7.032	-6.886	-66.698	469.020336	224-23-56	179-59-43	9.84
D60	-135678.581	-30533.829	-1.039	-1.017	-74.601	77.510439	224-23-13	179-59-17	1.45
B1	-135679.620	-30534.846	-1.457	9.561	-66.057	96.245049	98-39-53	54-16-40	9.67
B2	-135681.077	-30525.285	-1.987	6.525	-49.971	99.292377	106-56-12	188-16-19	6.82
B3	-135683.064	-30518.760	-5.867	14.217	-29.229	171.486543	112-25-29	185-29-17	15.38
B4	-135688.931	-30504.543	-0.141	0.189	-14.823	2.090043	126-43-27	194-17-58	0.23
B5	-135689.072	-30504.354	-0.240	0.320	-14.314	3.435360	126-52-12	180-08-45	0.40
B6	-135689.312	-30504.034	-1.023	0.477	-13.517	13.827891	155-00-05	208-07-53	1.12
B7	-135690.335	-30503.557	-2.486	6.520	-6.520	16.208720	110-52-14	135-52-09	6.97
合計					倍面積	2544.046804			151.86
					面 積	1272.0234020			
					坪 数	384.78			